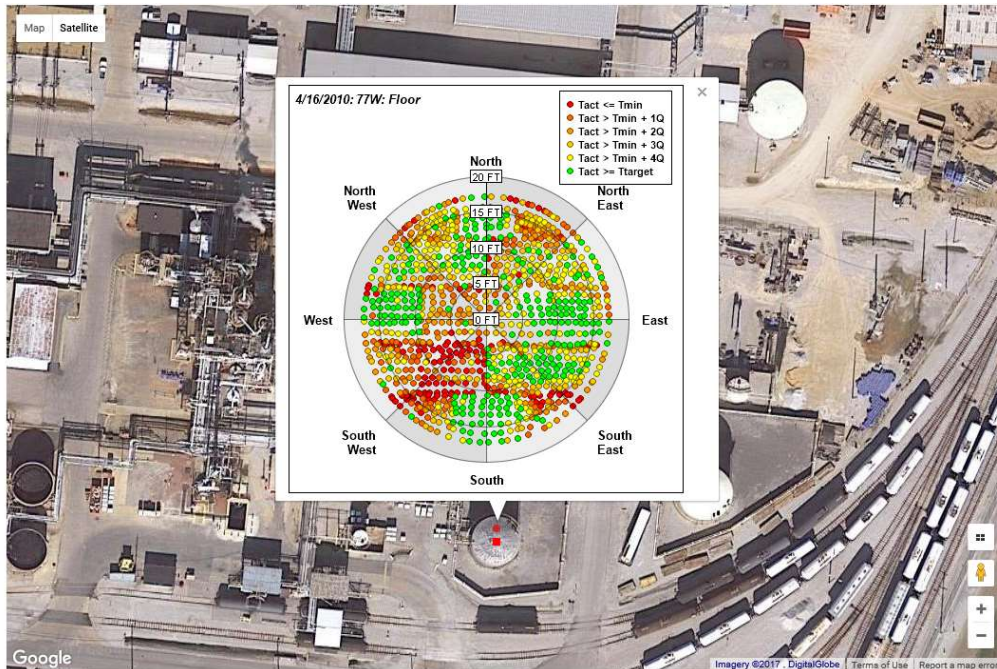


## Porting API 620 / 650 MI Data To A Better UI



Example API Tank Floor MI Screen. HCI Systems, Inc.

Inspection data for API 620/650 tanks can be voluminous. Many times this data is entered into an Excel spreadsheet which is then assembled into a report and goes to archive. Data visualization is poor and trends are harder to predict. There is a better way, port it to HCI's Google Map interface.

The screen shot herein displays MI data for an API tank floor color coded by material loss. Tank on-click events can show data plots as shown here, the actual MI records or tank reference documents and records. Drills down to tank components as well.

If you went through the effort to get the MI data, why not take it a little further and display it with a better user interface?

We Are HCI Software.

[www.hcisoftware.com](http://www.hcisoftware.com)

[sales@hcisoftware.biz](mailto:sales@hcisoftware.biz)